



ONslow HISTORICAL SOCIETY INC.

Established 1968

Newsletter

March 2022

Dear OHS Members,

We are on record for the quietest time in our long 54 year old history as Covid continues to weave in its mysterious ways to change our lives. Wellingtonians are cautious, as we should be in this moment, as Omnicrom circulates in huge numbers.

The Committee has responded accordingly and we have voted to put all events on hold until further notice. The exception is the outdoor event scheduled for this weekend – our walk into the fresh air of the Khandallah Park bush reserve and on, and up to even fresher air on Mt Kau Kau. Details are on page 2. So far about 10 people are taking part, so there is room for a few more. A wet day cancellation has been scheduled for the following weekend.

Meantime, I hope that publishing our Newsletter will fill the gap, in some way, of cancelled speaker events and be a good conduit as we share historical information, plus a bit of literary entertainment.

This is a good time for you, OHS Members, to send us your own stories and/or historical material including photographs that we can publish. An email to me at siersjudy@gmail.com would be best, or post or deliver to the door at KATE, 86 Khandallah Road, (wrap it well) or call in on a Sunday, 1–4pm. We are continuing to open KATE as usual. A double vaccine pass is a requirement followed by commonsense use of masks and distancing.

So here is the March newsletter, enjoy, AND before your do anything else, if you haven't paid your 2021–2022 sub, do it now!!!

Judy Siers

President

OHS Events March 2022

Waitangi Day Holiday Walk in Khandallah Park

Rescheduled for Sunday 20 March 2022

With a wet weather date the following Sunday, 27 March 2022

Full details are on page 2.

Note: All indoor events are on hold until further notice.

BUT – KATE will open as usual on Sundays, 1–4 pm, or by appointment.

Events in the future

An update on future events will be made by the Committee when the Omnicrom numbers decline.

Looking at the year's calendar, the AGM is our most important annual event and was scheduled for late May 2022. Members will be informed of a new date as soon as this is decided.



ONSLow HISTORICAL SOCIETY INC.
Established 1968

REMINDER

A new date for our Waitangi Day Walk

Sunday 20 March 2022

And we have a wet weather alternative on Sunday 27 March

RSVP and enquiries: John Galloway, 478 7603 or email: jghgalloway@slingshot.co.nz

Leader Chris Horne says:

Starting around 10.45 am from Simla Crescent Station, we'll walk on tracks in beautiful native forest with trees large and small, fine ferns, agile vines, a regenerating understorey and tiny creeks. Enjoy the sight and sounds of native birds. We'll climb the Northern Walkway to Mt Kaukau's lookout for spectacular views, then descend to Waitohi/Tyer's Stream and Café du Parc.

This will bring you to the Park entrance/exit, alongside the swimming pool, at the end of Woodmancote Road. There will be choices here: refreshment and conversation at the Café, a swim in the pool, and a walk back to the station either by footpath via Woodmancote Road, Boxhill and onwards, or a short walk through the Park and along Clark Street and Simla Crescent.

Wear: sturdy shoes or light boots and clothing suitable for the weather. In a small pack carry clothing for cold or wet weather should that eventuate.

Bring: lunch, a thermos, mask, sun-block, personal medication and if you wish, walking poles.

Catch: 10.32 am Johnsonville Line train from Wellington Station or 10.30 am train from Johnsonville Station.

Meet: Simla Crescent Station at 10.45 am.

Car parking: There is plenty of parking space around the station.

You will be met by John Galloway, 'meet and greeter'.

Looking forward to seeing you!!!

PS. A suggestion: read the last issue of *The Onslow Historian* and brush up on your knowledge before the event!



A scene in a New Zealand Forest near Porerua. In *Adventure in New Zealand*, Edward Jerningham Wakefield wrote of the virgin bush, west and north of Kaiwharawhara, containing webs of supplejack, vines and undergrowth between the noble forest trees of totara, rimu, matai, rata, hinau and many other varieties.

New Zealand Illustrated by George French Angus, published in 1846.

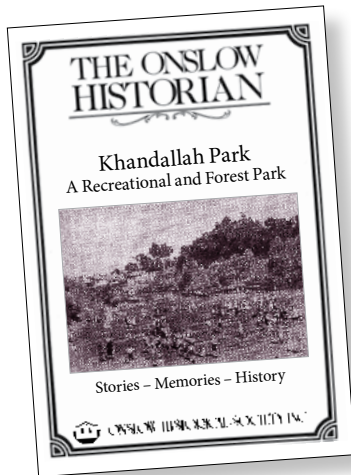
86 Khandallah Road, Wellington

email: onslowhistorical@gmail.com

~ Chorus is the Society's major sponsor ~



More About Khandallah Park



Our last *Historian* has proved a popular edition and we are proud to say around 40 extra copies have sold. We still have copies in stock selling at \$12.00 each. It is easiest to call in to KATE to purchase a copy, bringing cash with you; alternatively email us for arrangements for a copy to be purchased and posted.

As so often happens with publications, some of the

best material gets left behind for lack of page space. So here are some extras, ‘the ones that got left behind’.

This photograph (below) was taken from inside the Park looking across the pool towards the Park entrance on Woodmancote Road. The

Tea Shop is on the right. In the foreground the curved path leads to the bridge above the spring water stream that flows from Mt Kau Kau. This is the water supply so its always a cool pool!

Photograph and quote:
Onslow Historical Collection,
donor: *Jim Galloway 1967.*



Leonard James Durling and his wife, Anni (née Walker) and their son William Lacey Durling, pose by the Khandallah Pool, c.1935. It appears to be late in the summer season as the pool is empty presumably for the annual clean and and maintenance work.
OHS Archives, donor: June Fredericson 2019.



“Khandallah Baths One of Wellington’s Beauty Spots. Khandallah Baths one of Wellington’s beauty spots is the subject of controversy at the moment because of the wish of the local residents that the Council should install a water filtration plant.”
The Evening Post, 15 October 1967.

The Red Engine



If there has been one event, and a single WCC decision for change at

Khandallah Park that was highly contentious it would have to be the removal of the red engine from the childrens' play area. This big job happened in 1993 and was a memorable occasion captured in word and motion by the *Independent Herald* reporter and photographer. Onlookers, including many children, were intrigued and excited by the operation but disappointed at its departure.

The red engine was referred to in our latest *Historian*. On page 39 Jillian Carpenter provided an illustration, see opposite, of Jack (Jack and the Silver Scooter fame) and a friend posing on the engine *in situ*.

Clare Gleeson wrote of her childrens' interest in the engine on page 50: "... there was an old engine that they loved to get on ... they'd climb, or more often be helped, up and one of them would take the wheel turning it and looking through the gap that had been a window while the others stood and impatiently waited for their turn.

It was a sad day for all when it was deemed unsafe and removed.


Photographs: *The Independent Herald*, from their collection at OHS Archives.



IT HAPPENED IN NEW ZEALAND: Ross Gore


FIRST FEMALE LIBRARIAN?

1. IN THE YEAR 1889 WILLIAM HORT LEVIN, SUCCESSFUL WELLINGTON MERCHANT & PHIL-ANTHROPIST, GAVE THE FIRST £1000 TOWARDS THE ESTABLISHMENT OF A FREE PUBLIC LIBRARY FOR THE CITY OF WELLINGTON. THE IDEA TOOK ON - OTHERS SUBSCRIBED, AND BY 1893 THE LIBRARY WAS READY TO OPEN.



W.H. LEVIN, REMEMBERED FOR HIS CHARITIES.

2. IN FEB., 1893, THE WGTON. CITY COUNCIL ADVERTISED FOR AN ASSISTANT LIBRARIAN- MALE £120, FEMALE £80 PER ANNUM.




ALL WILL AGREE THAT TODAY THE FEMALE LIBRARY STAFF IS BOTH EFFICIENT & DECORATIVE, BUT IN 1893 THE VERY IDEA OF A FEMALE LIBRARIAN APPALLED A SECTION OF THE PUBLIC. WHY, WOMEN HAD NOT THEN RECEIVED THE FRANCHISE-YET HERE THEY WERE AFTER MEN'S JOBS.

INDIGNANT RATEPAYERS.

3. HERE IS A LETTER RECEIVED BY THE EDITOR OF "THE EVENING POST" FEB. 7, 1893.

"SIR, I REGRET TO NOTICE THAT THE CITY COUNCIL PROPOSE TO ALLOW FEMALES TO APPLY FOR THE POSITION OF ASSISTANT LIBRARIAN--- IT OPENS THE DOORS TO THE SUSPICION THAT THERE IS SOMETHING BEHIND THE SCENES, & THAT THE ALTERNATIVE OF APPLICATIONS FROM THE MALE SEX IS ONLY A BLIND."



THE WRITER, OF COURSE, IS UNKNOWN, SO WE MUST IMAGINE HIM.

4. HE CONTINUES-"THE MAJORITY OF THOSE WHO WILL PATRONISE THE LIBRARY WILL BE OF THE STERNER SEX."




TWO OF THE STERNER SEX.




APPARENTLY WOMEN OF THE 1890S HAD NO TIME TO READ ANYTHING BUT MRS BEETON.

5. "THE APPOINTMENT OF A LADY," SAYS THE WRITER, "WOULD DETERIORATE RATHER THAN POPULARISE THE INSTITUTION." THIS WOULD DEPEND ON THE COUNCIL'S CHOICE, & NOT ALL OF THE STERNER SEX OF THE 90S WERE AS STERN AS THE WRITER, WHO CONCLUDES - "IT IS ALL 'TOMMY ROT' FOR THE COUNCIL TO PANDER TO THE SOFTER SEX & GO IN FOR SUCH AN AMERICAN NOVELTY AS A FEMALE LIBRARIAN"



6. THE EDITOR OF "THE EVENING POST" E.T. GILLON, REPLIED-"WE ENTIRELY DISSENT FROM OUR CORRESPONDENT'S OPINION & THINK THE POSITION EMINENTLY SUITABLE TO BE FILLED BY A WOMAN. WE FAIL, HOWEVER, TO SEE THE JUSTICE OF OFFERING A WOMAN LESS SALARY THAN A MAN FOR DOING THE SAME WORK."



E.T. GILLON, ADVANCED IDEAS.

APPARENTLY THE EDITOR WAS A MAN WITH IDEAS MORE THAN 60 YEARS AHEAD OF HIS TIME.

ROSS GORE. COPYRIGHT.

Who remembers Ross Gore?

It is long ago that his popular comic/cartoon style of telling a story appeared weekly in the *Evening Post*. It is a forerunner style to the graphic novel approach so popular now in book form.

Here is one of my Ross Gore favourites, published on 10 August 1968. It's a telling tale in all sorts of ways and who would have guessed that a female librarian was viewed as an American Novelty.



Wellington

This is the place for a steep compact city.
This is the place to give you strength and palpitations,
the place to try and get and keep your balance in
before you die.

The city buildings are primarily white and lie
along a valley
from the enclosed harbour back to the rocky coast
which the arm leading into the enclosed harbour comes
from and belongs to, because a hand belongs
to a heart.

The houses of the city are loosely built of timber
and corrugated iron to move with earthquakes
and each has been placed on, against
or below the inner ridge of hills surrounding
the enclosed harbour, which we hope will never go.

D I N A H H A W K E N

This poem was published in an anthology compiled by Gregory O'Brien and Louise St. John, *Big Weather Poems of Wellington*, published by Vintage/Penguin 2018.