



ONslow HISTORICAL SOCIETY INC.

Established 1968

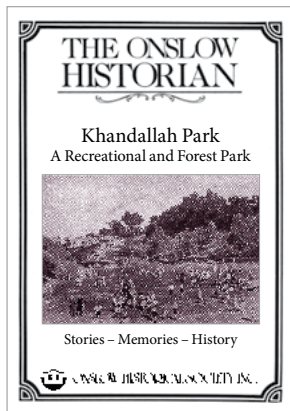
Newsletter

October 2021

Hello Members of OHS

I write with optimism that we will be able to proceed with our October event at the end of this month. Here's hoping for a step down to Level 1 before the 27th.

The launching of a new *Onslow Historian* is always a milestone and on this occasion we will be bringing



a number of contributors together who share their contemporary stories: Robert Mann, Roger Daniell, Clare Gleeson, Jillian Carpenter, Maxwell Bruce and Bruce Heather and members of Khandallah School's Class of 1953.

Khandallah Park and its surrounding bush is the

heart of Wellington's north – western suburbs. It is visited and known by all, so this *Historian* promises to have popular appeal. The invitation is on page 2 and we hope to welcome a good crowd on the night.

We will be welcoming our Mayor, Andy Foster to do the honours. Andy has often told me of his interest in history, his support of OHS and his respect and enjoyment of local heritage. I talked heritage issues constantly when we were on WCC together but that was some years ago so he may need reminding of the importance we all feel about our suburb at this touchy time in unusual Town Planning. We can let him know our strength by the attendance. He will be accompanied by his wife Ann.

Good health to everyone!

Judy Siers
President

OHS Events October 2021 – February 2022

Wednesday 27 October 2021

Launching *The Onslow Historian*

Khandallah Park – A Recreational and Forest Park

K.A.T.E. ■ 7.45 for 8pm

Note: this is later than our usual starting time.

Sunday 5 December 2021

Christmas Party 2021

Note: A change of date and arrangements.

Members will remember that we had to postpone the event planned for 19 September, "An afternoon with Wellington authors and historians Julia Millen and Anne Manchester".

The result is that we have created a double act and are rescheduling it with our Christmas Party. The latter was planned for 3 December and is now moved to Sunday 5 December.

An afternoon with Wellington authors and historians Julia Millen and Anne Manchester and our Christmas Party 2021

Sunday 5 December at
K.A.T.E. ■ 3pm – 6.30pm

Programme details in the next newsletter.

Waitangi Day February 2022

A days tramp with Chris Horne has been arranged .

More details in the next newsletter.



ONSLow HISTORICAL SOCIETY INC.
Established 1968

An Invitation

Please join us to launch *The Onslow Historian*

Khandallah Park – A Recreational and Forest Park

On Wednesday 27 October

At K.A.T.E. 86 Khandallah Road

7.45 for a 8pm start

Guest Speaker: Mayor Andy Foster

Paid members can collect their copy. Extra copies will be available for sale at \$12 each.

Supper will be served.

At conclusion of the evening OHS has arranged for attendees to visit the glow-worms at Khandallah Park. Allow about half an hour. We will be lead by Scout leader Norma Bryant who annually takes her Kea boys to see them. On this occasion she expects good behavior, that means good control of flashing torches and loud voices! Departure time from KATE will be announced. Parking will be available at the end of Woodmancote Road, at the entrance to the park.

Wellington City Council
WCC became owners of the Khandallah Park and Reserve city amalgamated with the Onslow Borough.
In the same year 184 acres were taken by proclamation of upper Kaikau Ridge.
In 1911 The Municipal Handbook of New Zealand had an of mostly standing native bush, on the west side of the Khandallah. The growth in the area and according to census the Notable growth occurred after amalgamation and two decades later in 1924 the area was divided into divisions.

Tari-Kaka – Some Memories
By Elsie Crompton-Smith, 1985
As we climbed a feeling of uplift and of peace, hard to describe, came over us. Was it the accomplishment of the climb and the wide open spaces? Possibly, or was it the quiet of the hills of Tari-Kaka that gently reminded us? I like to think so.

WELLINGTON CITY COUNCIL
The temperature of the pool has always been a discussion point – it's cold! And any talk over the years, to make it a heated and covered pool failed to take the idea further. In that regard it is a unique, open pool in Wellington.
Robert Bruce wrote about this aspect during the 1950s era.
We kids were really tough to swim there especially in the early season as the water was so cold. From the notes from Tiers Stream. As the opening day of the baths drew near anticipation of the event of "breaking the ice" would be first. How cold were the bath? Bruce recalls and recalled the temperature plunged down to around 50 (Celsius). It would warm up during the summer and could be a Khandallah bath at the opening of the swimming season 1951. THE SOCIAL HISTORY VOL. 100 (JANUARY 2018)

THE ONSLOW HISTORIAN
Khandallah Park
A Recreational and Forest Park
Stories – Memories – History
ONSLow HISTORICAL SOCIETY INC.

RSVP is necessary: John Galloway – 478 7603 – jghgalloway@slingshot.co.nz

The events will only take place if we have returned to level 1.

The glowworm visit is weather dependent.

Suggestion: wear a warm jacket, walking shoes and have a torch handy.

86 Khandallah Road, Wellington

email: onslowhistorical@gmail.com

~ Chorus is the Society's major sponsor ~



ONSLow HISTORICAL SOCIETY INC.
Established 1968



A different sort of Delta!

THE DELTA DANCE BAND

Live music in the suburbs 1950s – 1960s

The Delta Dance Band was a popular musical group in Khandallah, and around Wellington city, from 1953 until the early 1960s. It started as a trio with musicians Brian Smythe on piano, Dave Thompson on clarinet and Robbie Bruce on drums. When a gig demanded it, two other musicians joined the band, Trevor A'Court on guitar and vocals, and Noel Evans on stand-up double bass.

The Delta name was chosen as one of their items was the popular song 'Caravan' which had connotations with the desert and the deltas of the Nile and Mississippi rivers. The group thought this was imaginative and pretty cool for their image! The two bandstands had coloured triangles on them symbolising the Delta shape.

The initial repertoire was drawn from Selwyn Toogood's Lever Hit Parade, popular in the early 1950s. Rhythm and Blues predominated,

with Perry Como, Frank Sinatra and Bing Crosby, until the Rock and Roll revolution. From 1956 Bill Haley's 'Rock Around the Clock', Elvis Presley's 'All Shook up', 'Heartbreak Hotel', 'Don't be Cruel' and others were the rage. Brian has a good memory of how well these suited Trev's voice and his copy-cat Elvis-style greasy black hair!

Later the band turned to more classic Jazz Standards and modern Pop, including 'Cheek to Cheek', 'I Love Paris', 'Petite Fleur', 'Manhattan', 'How High the Moon', 'Witchcraft', 'Blue Moon', 'Tangerine' and 'Deep Purple'.

"We played these by ear as instrumentals, as apart from Trev's Elvis cover hits none of us were up to scratch vocally. Later we added tunes from the proliferating musicals, movies and stage shows of the time, including 'Sound of Music', 'My Fair Lady', 'South Pacific' and 'High Society'."

86 Khandallah Road, Wellington

email: onslowhistorical@gmail.com

~ Chorus is the Society's major sponsor ~



The Delta Dance Band in action.

Left and below left: The Scout Dance, 27 April 1957, and the first night with the new bandstands. Brian on piano, Dave on clarinet, Trev on guitar and Robbie on drums.

Above: The scene was 'Vic A' Hostel, on The Terrace during a student hop. It includes a one-off appearance of Bruno Lawrence of Blerta fame.

Left: Brian on debut night at the Khandallah Town Hall, 1954,

Brian has an old notebook listing hundreds of tunes and says "...we rarely played from sheet music – mostly from memory. In 1959 and again in 1961 the famous Dave Brubeck quartet visited Wellington; from then on their signature number 'Take Five' was on our playlist.

"When we started we charged one pound ten shillings entry fee which covered the cost of

hiring a set of drums. By the early 1960s we had earned a reputation and could charge a realistic fee – five pounds for each player. That was good money in those days," Brian says.

The Delta Band called it a day around 1962. Music was a hobby for the young men and they had to focus on their careers. Brian was completing a law degree, Dave was



ONSLow HISTORICAL SOCIETY INC.
Established 1968

studying as a pharmacist and Robbie as a veterinarian. It was a very different world, today good musos and top bands can operate fulltime and make a living, the Deltas did not have that option. Brian feels philosophical: “Looking back that was not a bad thing when we consider the shortened lives of musos like Buddy Holly, John Lennon, Jim Morrison,

Jimmie Hendrix, Whitney Houston, Freddy Mercury and all the rest. However, we had great times while it lasted and managed to avoid the perils that seem to plague so many these days.”

Thanks to Dave Thompson and Brian Symthe for this story and the photographs.

facebook



Tyers Stream posted in **Guardians of Tyers Stream (Kaitiaki o Waitohi)**
5 September at 11:02



Tyers Stream Walk & Talk

Monday, 25 October 2021 at 11:00 UTC+13

7 Lower Tyers Rd, Ngauranga, Wellington 6035, New Zealand

Join us for an hour and a half walk into a hidden gem in Khandallah. Tyers Stream reserve is an ‘ecologically significant’ (WCC) and historically significant area. Come learn about the history and wha...

[View on Facebook](#)